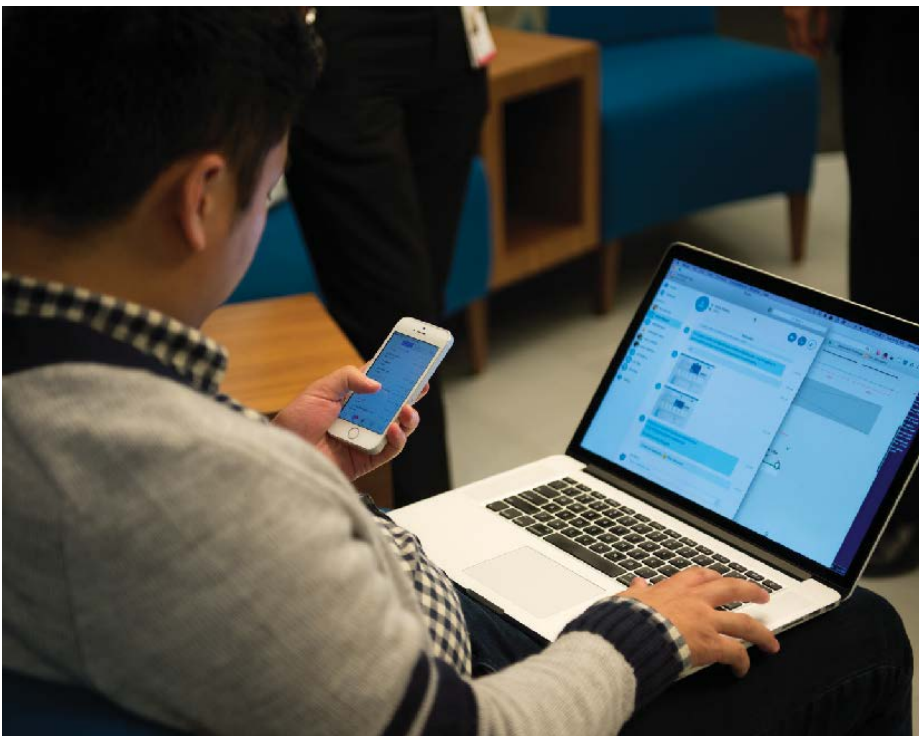


Your business runs fast. It needs an Internet service provider that can keep up.



AT&T Internet Access provides you super-fast Internet access using multiple broadband access technologies. With the features you need to stay connected to your customers, business partners, suppliers and employees.

- Speeds up to 1Gbps downstream/upstream at an affordable price
- Reliability you can count on – optimal performance, scalability over AT&T's highly secure network
- High capacity to support multiple employees that need simultaneous Internet access
- The ability to support a Wi-Fi network for your employees or your customers

Features:

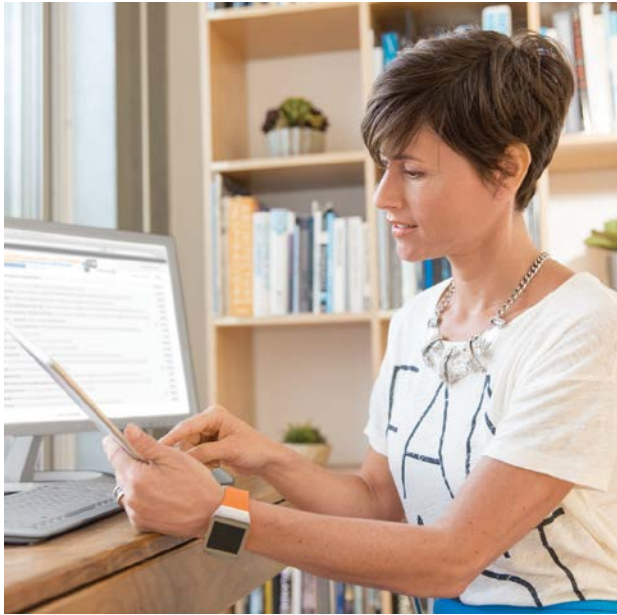
- Symmetric and Asymmetric speeds from 768Kbps up to 1Gbps
- Direct Consumption Quote API to accelerate quoting process
- Static and Dynamic IP addressing
- Single contract and invoice for all locations
- Wi-Fi networking via Router or Fiber Broadband Gateway
- On-site installation by AT&T technicians*

Potential benefits:

- Quickly upload, download and share large data files
- Easily back up to the cloud from one or more data locations
- Video conference with customers, suppliers and business partners
- Faster research and browsing on the web

* Installation charges may apply depending on service option ordered.





Broadband Access

Customer locations may qualify for several transport options provisioned using copper, a combination of copper and fiber, or all fiber. For customers in AT&T Fiber ready buildings, service is provisioned on Ethernet over fiber up to 1Gbps with asymmetrical and symmetrical options.

Reliability in the Network

AT&T is a leading Tier-1 Internet service provider with a high performing IP network and service level agreements including install intervals, network availability, network latency and packet loss.

AT&T Internet Access is no ordinary Internet connection. Businesses can expect reliability, optimal performance, and scalability on a highly secure network from one of the world's leading service providers.

Consolidate and save

AT&T Internet Access offers

- 21-state footprint
- Single contract and discounting covering multiple Broadband and DSL technologies
- Utilize the AT&T Partner Exchange Portal for prequalification, site design, and site inventory
- Platform to support over-the-top customer applications

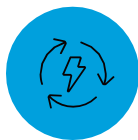
What can you do with faster Internet speeds?

- Ready access to AT&T's high-speed fiber backbone at qualifying building locations.
- Quickly upload, download, and share large data files and images.
- Easy backup in the cloud at one or multiple locations.
- Video conference with suppliers, customers, and business partners.
- Reliability, optimal performance scalability, and great security features.

What can you do with faster Internet speeds?



Ready access to AT&T's high-speed fiber backbone at qualifying building locations.



Quickly upload, download, and share large data files and images.



Easy backup in the cloud at one or multiple locations.



Video conference with suppliers, customers, and business partners.



Reliability, optimal performance scalability, and great security features.



Broadband Service Available with Dynamic or Static IP addresses	Broadband II Service Available with Dynamic or Static IP addresses		SDSL Service*	ADSL In-Region
Broadband up to 768K/up to 384K*	Broadband II 25M/5M	Broadband II 200M/200M	SDSL up to 1.1/1.1M SDSL up to 1.5/1.5M	ADSL up to 768K/up to 128K
Broadband up to 1.5M/up to 384K-1M	Broadband II 25M/25M	Broadband II 300M/75M		ADSL up to 1.5M/up to 384K
Broadband up to 3.0M/up to 512K -1M	Broadband II 50M/10M	Broadband II 300M/300M		ADSL up to 3.0M/up to 512K
Broadband up to 6.0M/up to 768K-1M	Broadband II 50M/50M	Broadband II 500M/100M		ADSL up to 6.0M/up to 768K
Broadband up to 12M/up to 1M	Broadband II 100M/20M	Broadband II 500M/500M		
Broadband up to 18M/up to 1.5M	Broadband II 100M/100M	Broadband II 1G/200M		
Broadband up to 24M/up to 3M	Broadband II 200M/40M	Broadband II 1G/1G		
Broadband up to 45M/up to 6M				
Broadband up to 75M/up to 8M				

* dynamic IP only

* Static IP addresses only

Notes:

- ADSL In-region offers line-share and dedicated ADSL options
- IP address options vary between ADSL services
- Dynamic or Static IP addresses available

To learn more about what AT&T Internet Access can do for you, contact your AT&T Partner Exchange CAM

Share this with your peers  

